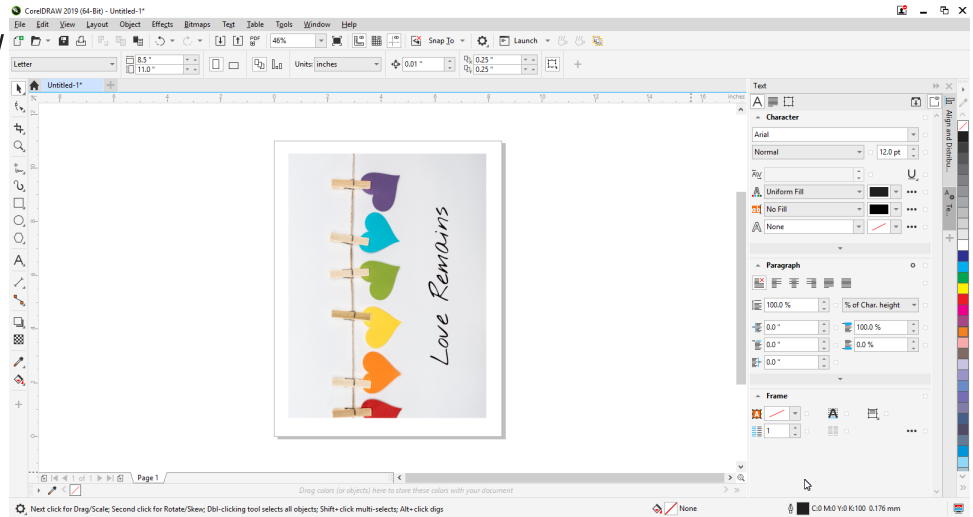


SubliMate™ ICC Profiles for Corel

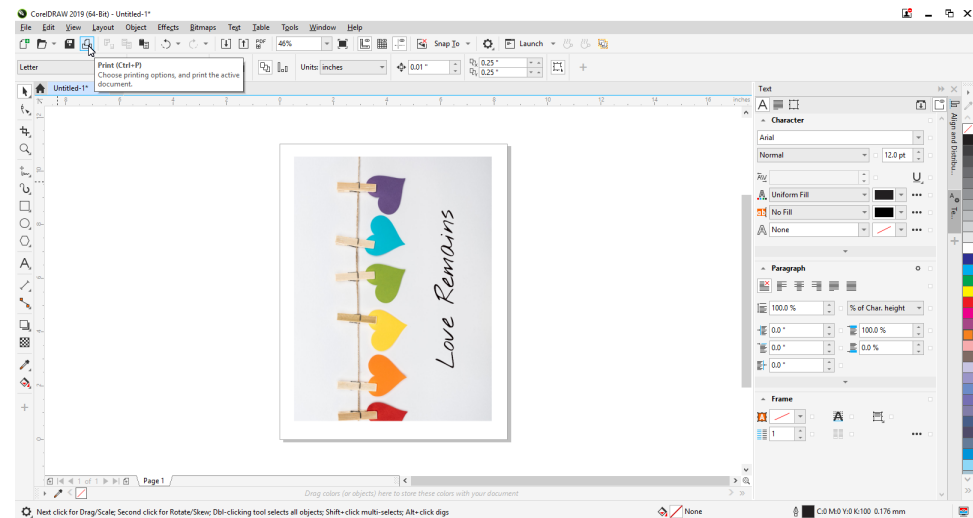
How to load a profile in Adobe Suite Applications

This bulletin describes the procedure on how to use custom profiles for Dye SubliMate™ Ink.

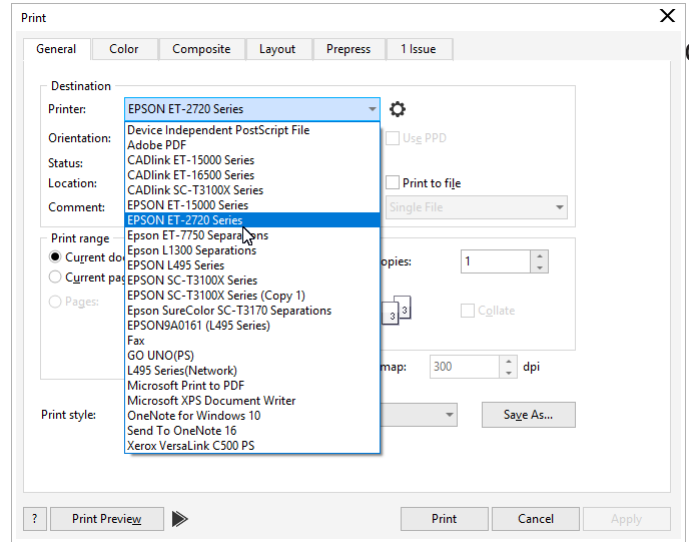
1. Open your file in CorelDraw



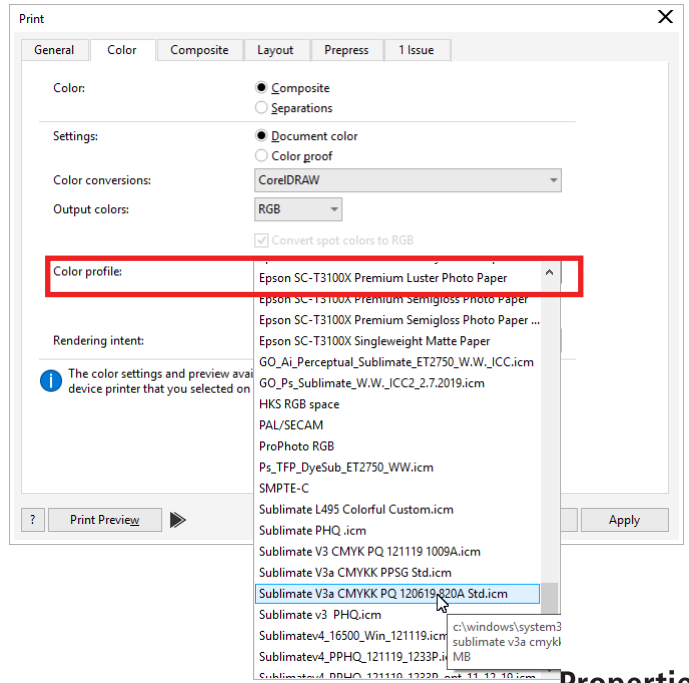
2. Send your file to Print



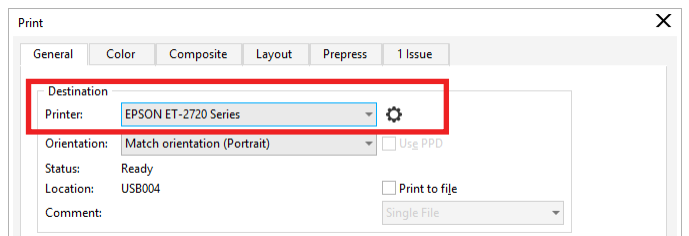
3. Select your **Printer Model**, once selected click the **Color Tab**



4. In the **Color Tab**, on The Color Profile section in the dropdown menu, select the saved color profile



5. In the General Tab, click on the **Printer** previous versions)



6. In the Printer Properties Window, select you **Paper Source, Paper Size** and for Paper Type and Quality, select the Following:

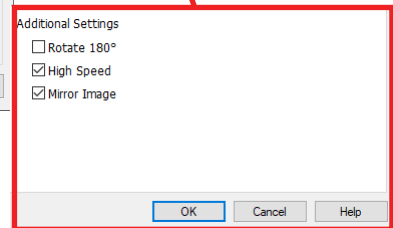
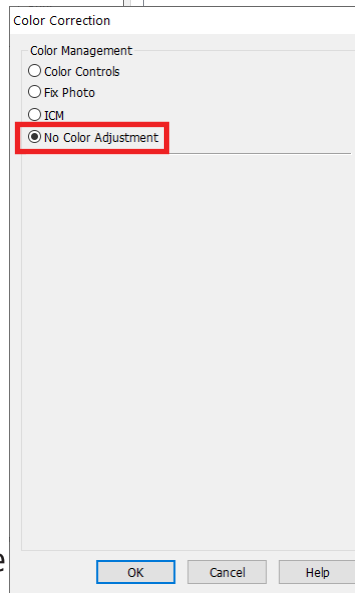
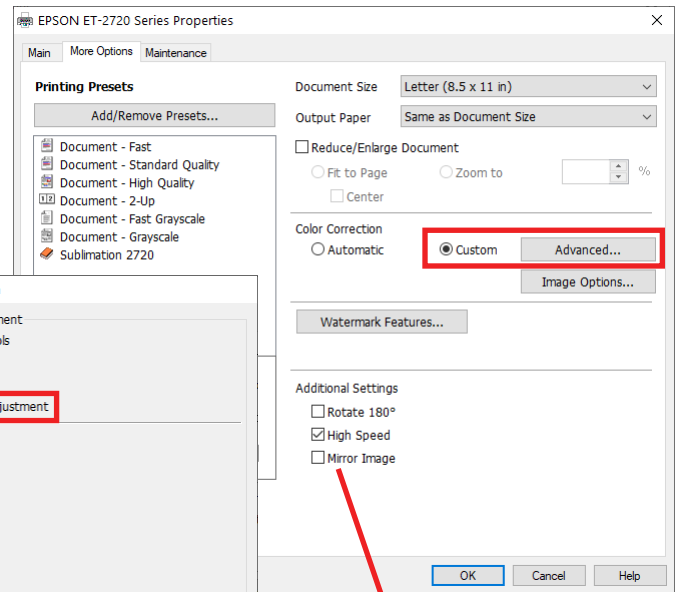
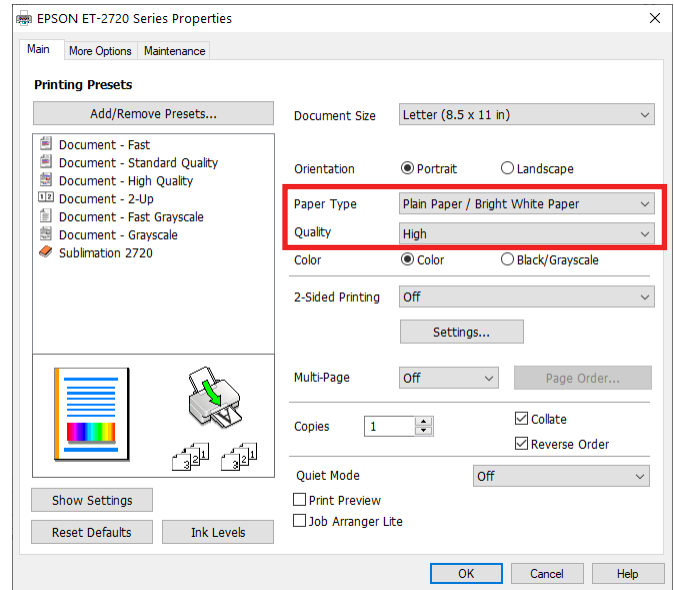


The technical specifications and performance capabilities listed herein are subject to change at any time and may not reflect actual production capabilities. Graphics One is not responsible for any incorrect information contained herein and urges any buyer or potential buyer to test the product prior to making a purchase.

Graphics One, 824 W. Ahwanee Avenue. Sunnyvale, CA 94085, USA Tel: 818-260-9591, Email: sales@graphicsone.com, Website: www.graphicsone.com ©Copyright 2017 Graphics One, GO (Graphics One), are trademarks of Graphics One. All other trademarks are properties of their respective companies.

Plain Paper / Bright White Paper High

7. In **More Options** tab under Color Correction, select Custom/Advanced and select **No Color Adjustment**, click **OK**.



ear or Properties button in
8. Be sure to Mirror your Image, by selecting **Mirror Image**.

Click **OK** and then **Print**, your Image will be Printed Out