

ET Series Ink Change Over

Procedure to change over dye sublimation inks from previous versions to V5 in GO DyeSub Ecotank Printers

This guide describes the procedure on how install V5 inks on GO DyeSub Ecotank Printers.

1. Ensure that the previous version of ink in GO DyeSub Ecotank Printer is between the current lines presented in the image on the right.

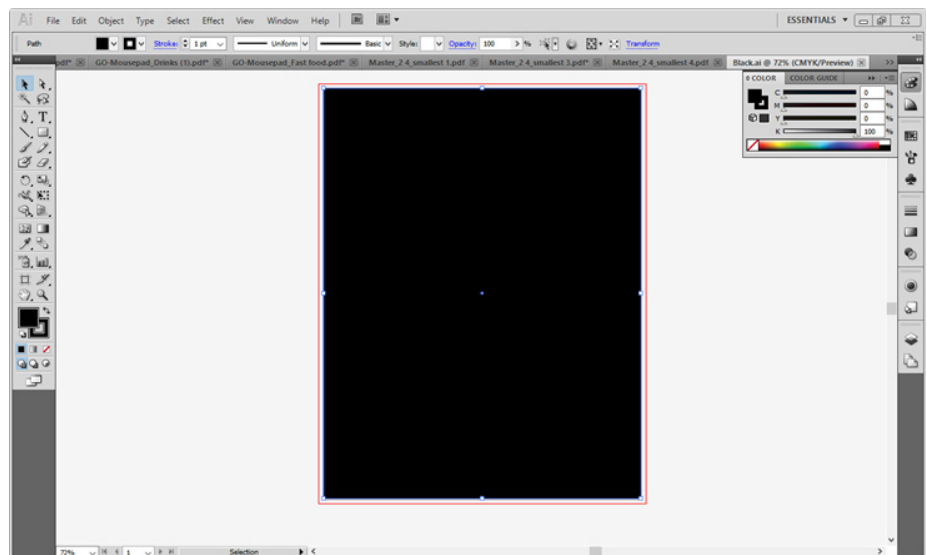
If the level is close but not within range specified above, print multiple full pages of a single color to lower the volume sufficiently.



Solid Color Prints

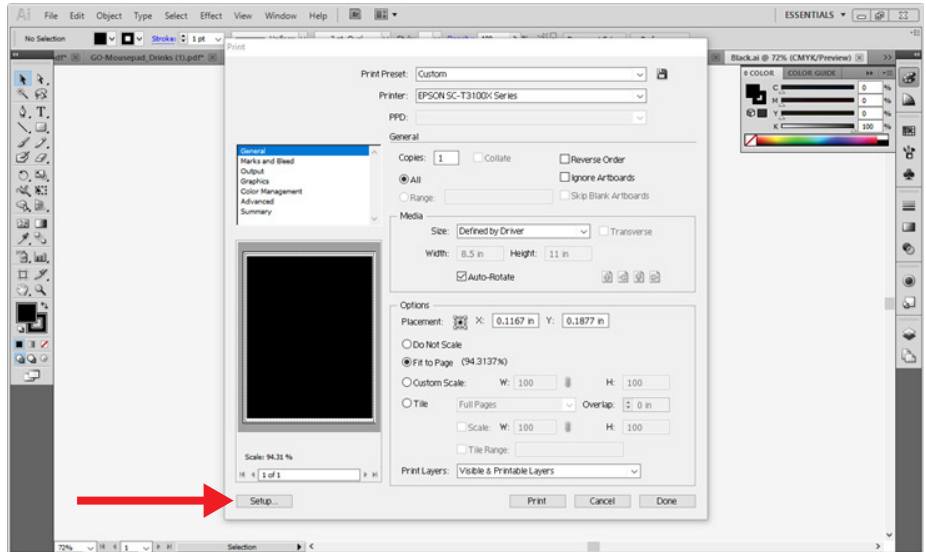
If prints of solid color are required, then use a program similar to Adobe Illustrator or other graphics software.

Create a 8.5 x 11" art board and add a rectangle with a 100% of the color in question (you need to do the same for Cyan, Magenta, Yellow and Black).

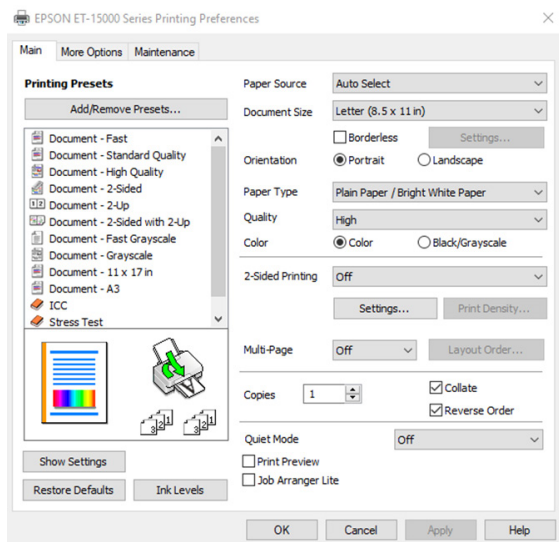


Select the **Print** option in Adobe Illustrator or any other used software.

Choose your printer and then select **Setup**.



Ensure that **Plain Paper** is selected as the paper type and that **High** is selected as the quality in the printing preferences.

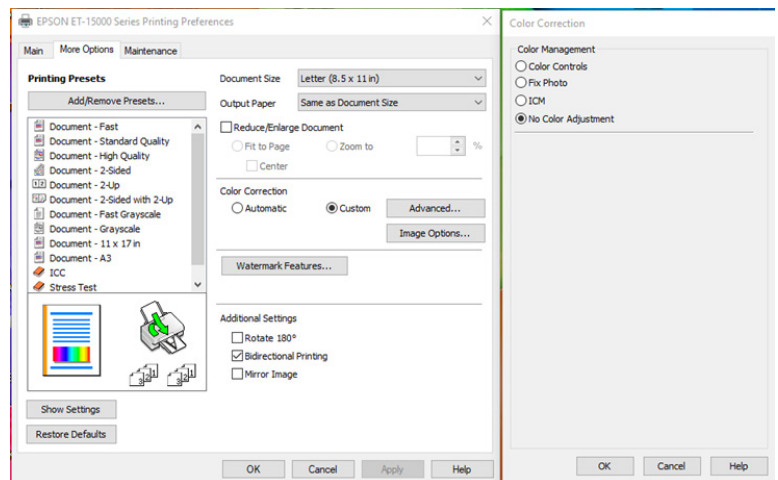


On **More Options** tab under Color Correction click on **Custom**.

Then select the advanced button and a dialogue box will pop up with the type of color management you would like to select.

Please select **No Color Adjustment**.

You can now print 10 copies of the image using the above settings.

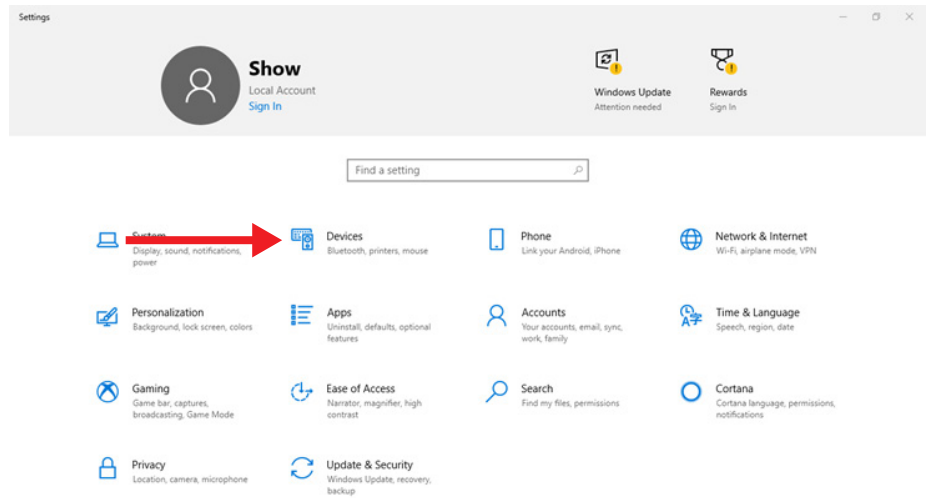


2. Once the ink is between the two lines shown above, fill each of the individual tanks with their corresponding V5 colored ink that is supplied, to the top line of each tank.



3. An ink flush is now required to ensure the new ink is present at the printhead.

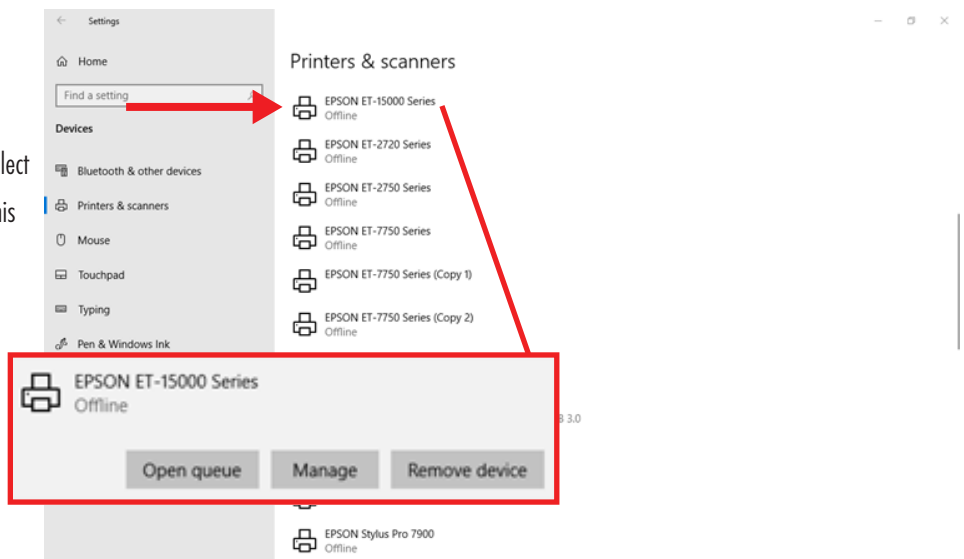
Please note that this cleaning is much stronger than a standard printhead cleaning and will use up more space in the maintenance tank. A new maintenance tank may be required to be on hand if there is not sufficient room available in the one installed.



First you must go to the printing preferences dialogue box by going to the windows settings and selecting **Devices**.

Once we are in the device window please select the printer you wish to use. (ET-15000 in this document).

Once the printer dialogue box is opened, select **Manage**.

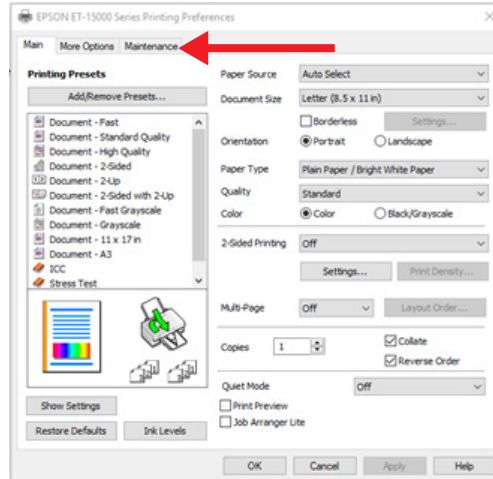


Please select the **Printing Preferences**.

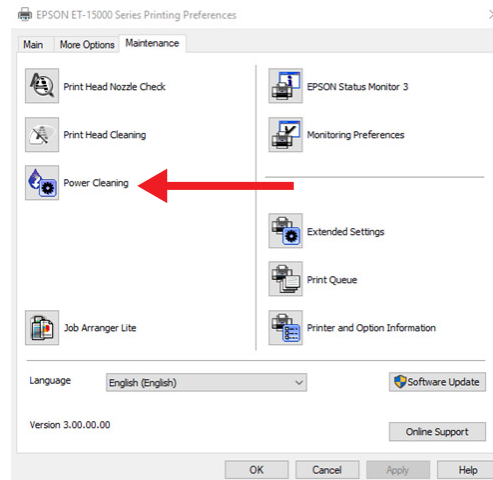
- [Print a test page](#)
- [Run the troubleshooter](#)
- [Printer properties](#)
- [Printing preferences](#)
- [Hardware properties](#)



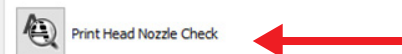
On the printing preference box. Select the **Maintenance** tab.



Select the **Power Cleaning** option in the Maintenance Tab of the Epson Printing Preferences window. Follow the steps and click as appropriate. This cleaning option will take approximately 20 minutes.



4. Perform a nozzle check once the cleaning has been completed to ensure that all nozzles are present. Select the **Print Head Nozzle Check** option in the Maintenance Tab of the Epson Printing Preferences Window. If nozzles are missing, it may be required to let the printer stand for an hour to ensure any lost nozzles recover and perform another nozzle check.



5. If further ink needs to be purged either a standard **Print Head Cleaning** or printing multiple pages of a solid color can be performed.

