



SCREEN PRINTING • CONVEYOR DRYERS

MB SERIES

Table Top Conveyor Dryers



MB21-1500
 4' Conveyor
 18" Chamber
 1440w
 12.5 A
 120 v



18" Belt Width



No Crating Fee



Built-in Dial Speed Control

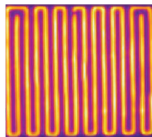


Includes TruTrak® Belt

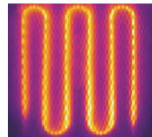
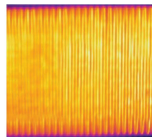
Take your shop or live printing operation to the next level. The BBC MB Table Top Series uses proprietary, highly efficient BBC infrared panels which provide the most even and efficient heat distribution available on the market today. Don't believe us? See for yourself below. The BBC MB Series comes with a true plug & play standard 15A plug so no adaptors or special electrical outlets are required. With edge-to-edge heat coverage, the MB Series cures the largest print images in its class. BBC knows your time is precious and you don't want to waste it fussing with belt tracking issues so the MB Series dryers come standard with the BBC TruTrak belt tracking system. Set it and forget it! As the ONLY electric infrared heat manufacturer in the industry, BBC KNOWS HEAT.

SEE FOR YOURSELF!

Below are actual infrared comparisons between BBC heaters and our competitors.



COMPETITOR 1



COMPETITOR 2

Production rates are based on the following:
(times may vary based on process)

	Dwell Time	Shirts per hour		
Plastisol	45s	70	60	50
Process Examples				
		18" x 18"	18" x 20"	18" x 24"