

procap[®]

capillary film

Printers will appreciate its workhorse durability for demanding print runs, and its user friendly convenience. Pro/Cap films maintain quality imaging on even the longest print runs. Available in both rolls and custom cut sheets.

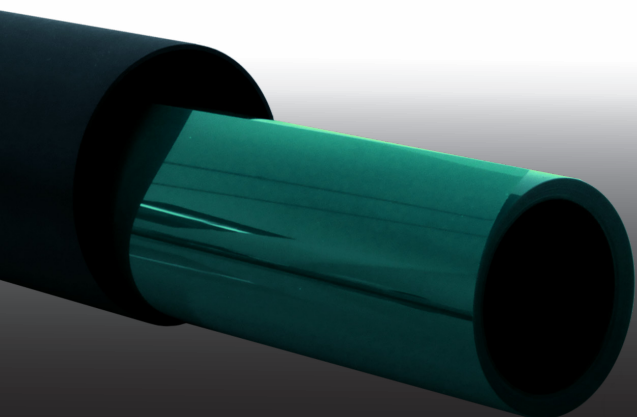
- **Pre-sensitized diazo capillary film**
- **Superior film penetration and adhesion**
- **Economically Priced**
- **High edge definition**
- **Reliable durability**
- **Compatible with plastisol and solvent based inks**

Workhorse Durability

Pro/Cap film provides reliable durability, at an affordable price, for demanding print runs.

SIZE/THICKNESS	MESH COUNT	APPLICATION
Pro/Cap 15 (0.6 mil/15μ)	380 & finer, 150cm	Primarily UV printing and fine halftones.
Pro/Cap 18 (0.7 mil/18μ)	380 & finer, 150cm	Standard UV printing, halftones and delicate line work.
Pro/Cap 20* (0.7 mil/20μ)	380 & finer, 150cm	Standard UV printing, halftones and delicate line work.
Pro/Cap 25 (1 mil/25μ)	305 & finer, 120cm	Large dot halftones, fine graphics/decals, heavier deposit UV printing.
Pro/Cap 30 (1.2 mil/30μ)	305 & finer, 120cm	Large dot halftones, fine graphics/decals, heavier deposit UV printing.
Pro/Cap 38 (1.5 mil/38μ)	200 - 305, 78-120 cm	General graphics printing, soft hand textile and halftones in textiles.
Pro/Cap 50 (2 mil/50μ)	200 & coarser, 78cm	General textile printing, solder mask for circuit boards, specialty graphics.

* Pro/Cap 20 is a non-stock item, not sold domestically



CHEMICALS REQUIRED

Chroma/Wet™ iSC
degreaser / adhesion promoter

Chroma/Strip™ iSC
ready-to-use stencil remover

RECOMMENDED

Chroma/Fill™ Red iSC
permanent screen blockout

Chroma/Last iSC
stencil hardener

Chroma/Wet™ iSC
degreaser / adhesion promoter

SAFETY AND HANDLING

Pro/Cap Film should be handled like any other capillary film. This material is not hazardous when used within reasonable standards of industrial hygiene and safe working practices. Refer to SDS for further information.

STORAGE

Pro/Cap films should be stored at room temperature and should not be stored at temperatures above 80°F (27°C) or below 32°F (0°C). Pro/Cap film should be stored in its original container.

Pre-Sensitized Pro/Cap films are light sensitive. Open under yellow or subdued lighting.

Coated, unexposed screens can be stored up to one month in a clean, dry and completely dark area.

MATERIALS REQUIRED

Exposure unit
Clean work area
Washout sink

RECOMMENDED

Drying cabinet
Pressure washer
Exposure calculator

Pro/Cap



INSTRUCTIONS

DEGREASE

Work up a lather on both sides of mesh to degrease. Be sure to use only a high-quality mesh degreaser, such as Chroma/Wet iSC designed specifically for this purpose. Rinse thoroughly.



WET

Capillary films require a thoroughly wet screen. With the screen in a vertical position, paint Chroma/Wet iSC wetting agent onto the print side of the screen. (Use a separate brush just for this step.) Wait a moment, then flood entire screen with a garden type hose.

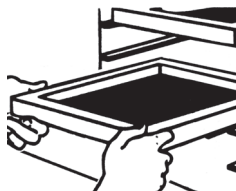
ROLL-DOWN

Cut the film to size and roll it up, emulsion side out. Reflood the screen with water and attach the roll of film to the top of the print side of the screen. With slight pressure roll the film down until the entire piece is in contact with the mesh. Use a window squeegee to remove excess water from squeegee side only.



DRY

Thoroughly dry the screen in a dark area, then remove the carrier. You will know the film is dry when the carrier peels off easily. If the carrier makes any noise when being pulled off, or resists being pulled off, additional drying time is needed. Do not exceed high temperatures of 110°F (43°C).



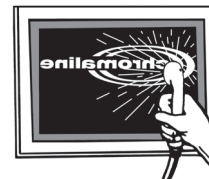
EXPOSE

With polyester carrier peeled off, place the emulsion side of the positive against the print side of the screen in an exposure frame. Run an exposure test to determine your correct exposure. (See guide at right.)



DEVELOP

Gently spray both sides of screen with lukewarm water, wait 30 seconds then gently wash print side of the screen until image is fully open. Rinse both sides thoroughly. Dry screen completely and you are ready to print.



RECLAIM

Apply a high quality screen reclaimer, such as Chroma/Strip iSC to both sides. Scrub area to be reclaimed with a stiff nylon brush to ensure entire surface is wet and let sit until stencil begins to dissolve. Remove stencil residue with pressure washer, then rinse with hose, thoroughly flooding screen and frame.



*Do not let reclaimer dry

EXPOSURE GUIDELINES

Note: Exposure times are suggested only as a guide. Individual exposure times may vary depending upon equipment used, bulb age, and other shop conditions. Suggested exposure times are as follows:

Exposure times were determined by using the Chromaline Exposure Calculator. Exposure times were set for a 5KW unit at 40" from the frame. All screen mesh was yellow in color.

FILM THICKNESS	TIME
Pro/Cap 15	32-42 sec.
Pro/Cap 18	36-48 sec.
Pro/Cap 20*	40-50 sec.
Pro/Cap 25	45-60 sec.
Pro/Cap 30	50-65 sec.
Pro/Cap 38	65-85 sec.
Pro/Cap 50	90-120 sec.

* Pro/Cap 20 is a non-stock item, not sold domestically.

ADDITIONAL TIPS

FOR INCREASED RESISTANCE TO HUMIDITY

Chroma/Last iSC stencil hardener keeps presses running during periods of high temperature and high humidity. This easy to apply liquid produces dramatic results.



PRINT WITH CONFIDENCE

help@chromaline.com | www.chromaline.com

Toll Free: (800) 328-4261
International: +1-218-628-2217



Follow us!

An IKONICS Company | ISO 9001 Certified