

DTG/WB/PLASTISOL INFRARED DRYERS

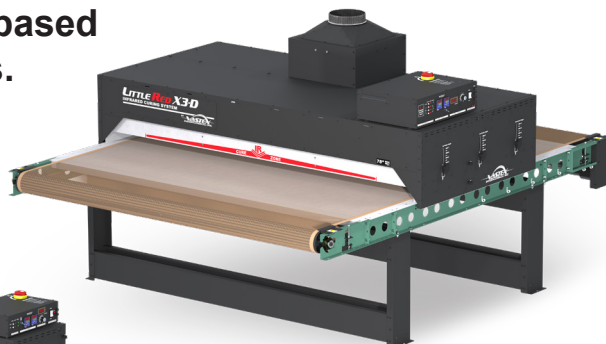
LITTLERED X-D SERIES

**15 YEAR
HEATER WARRANTY**

Advanced technology speeds curing of ink jet, water-based and discharge inks.



LR-X2D-30



LR-X3D-78



LR-X1D-54



LR-X1D-30

LittleRed Digital series dryers have a dual zone heat control, with a boost zone to quickly reach cure temperature. This makes it GREAT Inkjet curing! With a second X3 chamber, the LR-X3D-30-2 and LR-X3D-54-2 can handle higher production including longer times necessary for Kornit printers.

CE CERTIFIED
BY CERTIFICATION EXPERTS
THE NETHERLANDS

	18" Belt LR-X1D-18	30" Belt LR-X1D-30	30" Belt LR-X2D-30	30" Belt LR-X3D-30	54" Belt LR-X1D-54	54" Belt LR-X3D-54	78" Belt LR-X3D-78
Total Wattage	1,860w	4,050w	6,300w	8,900w	8,100w	17,800w	26,700w
Belt Width	18" (46 cm)	30" (76 cm)	30" (76 cm)	30" (76 cm)	54" (137 cm)	54" (137 cm)	78" (198 cm)
Heater Width	18" (46 cm)	24" (61 cm)	24" (61 cm)	24" (61 cm)	48" (122 cm)	48" (122 cm)	72" (183 cm)
Conveyor Length	48" (122 cm)	48" (122 cm)	66" (168 cm)	88" (224 cm)	66" (168 cm)	88" (224 cm)	102" (260 cm)
Chamber Length	18" (46 cm)	18" (46 cm)	27" (69 cm)	41" (104 cm)	18" (46 cm)	41" (104 cm)	41" (104 cm)
Powered Exhaust	177 CFM (5 CMM)	280 CFM (7.9 CMM)	280 CFM (7.9 CMM)	388 CFM (11 CMM)	280 CFM (7.9 CMM)	550 CFM (15.6 CMM)	1,100 CFM (31.2 CMM)
CURE TIMES							
Plastisol @ 25 secs*	162+/hr	162+/hr	240+/hr	360+/hr	324+/hr	720+/hr	1,080+/hr
Waterbased/ Discharge @ 50 secs*	81+/hr	81+/hr	122+/hr	185+/hr	162+/hr	370+/hr	555+/hr
Digital White Ink @ 3 min.*	23/hr	23/hr	34/hr	51/hr	46/hr	103/hr	155/hr

Features

- HEAVY DUTY** "X-Series" Conveyor Belt Roller Tracking System with Teflon coated fiberglass belt and HD belt motor
- ACCURATE ADJUSTABLE** Dual digital PID Temperature controller is accurate to +/-1°F 2" - 7" (5 - 17.7 cm) belt-to-heater clearance, adjustable separately on each side for each heater
- EXHAUST** High powered exhaust to remove fumes and moisture
- CONSISTENT** Precision DC belt speed control w/ digital display
- EXPANDABLE** Add additional heat chambers and conveyor extensions

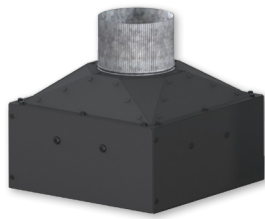
Options

- Additional chambers can be added as well as belt extensions
- Locking casters for easy mobility
- Creeper gear
- Donut Probe

* Production speeds are estimates are based on 16" centers and will vary depending on ink manufacturer, humidity of shop, and other variables.



INFRARED DRYER ACCESSORIES



EXHD

Add-On exhaust for
D-100 and D-1000

S-100



Mobile Stand w/ wheels

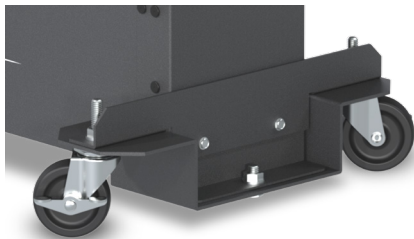
Two sizes available

- 27 x 27" (68.6 x 68.6 cm)
- 27 x 35" (68.6 x 88.9 cm)

Optional screen shelves and drawer kits

Perfect for:

- Presses and dryers
- PTF-100 powder shaker
- Additional worktop space

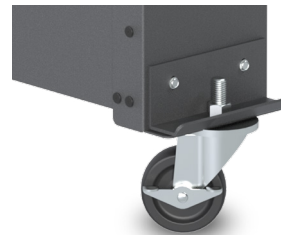


WS-E-DD

Drop Down Wheel Set for
DB, LR & EC-I Dryers

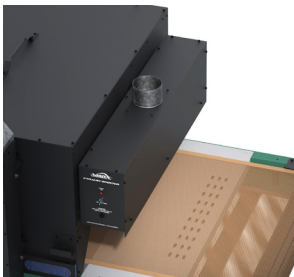
WS-EHD

Drop Down Wheel Set for
EC-II, ER & BR Dryers



WS-EC

Standard Wheel Set for
all non-tabletop Dryers



EXHAUST HOOD

Strongly recommended for DTF adhesives

FEATURES

- Removes fumes at exit the dryer
- EXH-18 fits 18" (46cm) to 30" (76cm) wide belts
- EXH-42 fits 54" (137cm) wide belts
- EXH-66 fits 78" (198cm) wide belts
- Available in 120v or 240v



CONVEYOR AIR BAR

FEATURES

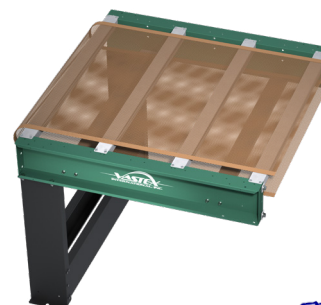
- Cools ink as garments exit the dryer
- CABX-30 fits 33.1-39.1" (84-99cm) wide conveyor
- CABX-54 fits 58.3-64.3" (148-163cm) wide conveyor
- CABX-78 fits 82.3-88.3" (209-224cm) wide conveyor
- Works on many non-Vastex dryers
- Available in 120v or 240v



HAT SUPPORT RAIL

FEATURES

- Angles hats so front is parallel with heaters
- HR-1 fits EconoRed II dryers
- HR-2 fits EconoRed III & BigRed Dryers



CONVEYOR EXTENSIONS

Extend your conveyor in
18" (46cm), 36" (92cm) and
54" (137cm) increments



LittleRed XD Series

Technical Specifications



	LR-X1D-18	LR-X1D-30	LR-X1D-54	LR-X2D-30	LR-X3D-30	LR-X3D-54	LR-X3D-78	
Heater Warranty	15 Year	15 Year	15 Year	15 Year	15 Year	15 Year	15 Year	
Defect Warranty	3 Year	3 Year	3 Year	3 Year	3 Year	3 Year	3 Year	
Shirts/hr Plastisol @ 25 secs	162+	162+	324+	240+	360+	720+	1,080+	
Shirts/hr wb/discharge @50 secs	81+	81+	162+	122+	185+	370+	555+	
Shirts/hr DTG/digital	34 @ 2 min. 27 @ 2.5 min. 23 @ 3 min.	34 @ 2 min. 27 @ 2.5 min. 23 @ 3 min.	68 @ 2 min. 54 @ 2.5 min. 46 @ 3 min.	51 @ 2 min. 40 @ 2.5 min. 34 @ 3 min.	77 @ 2 min. 61 @ 2.5 min. 51 @ 3 min.	154 @ 2 min. 123 @ 2.5 min. 103 @ 3 min.	231 @ 2 min. 185 @ 2.5 min. 155 @ 3 min.	
Time in Tunnel Range (mm:ss)	00:21 - 03:07	00:21 - 03:07	00:23 - 03:19	00:31 - 04:40	00:22 - 03:10	00:22 - 03:10	00:22 - 03:10	
Belt Speed	0.7 - 9.3 FPM* (0.2 - 2.8 MPM)	0.7 - 9.3 FPM* (0.2 - 2.8 MPM)	0.7 - 9.3 FPM* (0.2 - 2.8 MPM)	0.7 - 9.3 FPM* (0.2 - 2.8 MPM)	0.7 - 9.3 FPM* (0.2 - 2.8 MPM)	0.7 - 9.3 FPM* (0.2 - 2.8 MPM)	0.7 - 9.3 FPM* (0.2 - 2.8 MPM)	
Belt Motor Torque	100 in-lb	100 in-lb	100 in-lb	100 in-lb	100 in-lb	100 in-lb	100 in-lb	
Exhaust (Free Air)	144 CFM (4.1 CMM)	280 CFM (7.9 CMM)	280 CFM (7.9 CMM)	280 CFM (7.9 CMM)	650 CFM (18.4 CMM)	550 CFM (15.6 CMM)	1,100 CFM (31.2 CMM)	
Exhaust Diameter	4" (10.16 cm)	6" (15.24 cm)	6" (15.24 cm)	6" (15.24 cm)	8" (20.32 cm)	8" (20.32 cm)	8" (20.32 cm)	
Overall Length	48" (122 cm)	48" (122 cm)	66" (168 cm)	66" (168 cm)	88" (224 cm)	88" (224 cm)	102" (260 cm)	
Overall Width	30" (76 cm)	41" (105 cm)	65" (166 cm)	41" (105 cm)	41" (105 cm)	65" (166 cm)	89" (226 cm)	
Overall Height	50" (127 cm)	50" (127 cm)	50" (127 cm)	50" (127 cm)	50" (127 cm)	50" (127 cm)	54" (137 cm)	
Belt Width	18" (46 cm)	30" (76cm)	54" (137cm)	30" (76cm)	30" (76cm)	54" (137cm)	78" (198 cm)	
Chamber Length	18" (46 cm)	18" (46 cm)	18" (46 cm)	27"(69cm)	41"(104cm)	41"(104cm)	41"(104cm)	
Chamber Infeed Width	21" (53 cm)	33.5" (85 cm)	33.5" (85 cm)	33.5" (85 cm)	33.5" (85 cm)	57.5" (146 cm)	81.5" (207 cm)	
Chamber Infeed Height (adjustable)	2" - 7" (5 - 17.7 cm)	2" - 7" (5 - 17.7 cm)	2" - 7" (5 - 17.7 cm)	2" - 7" (5 - 17.7 cm)	2" - 7" (5 - 17.7 cm)	2" - 7" (5 - 17.7 cm)	2" - 7" (5 - 17.7 cm)	
Heat Range @ Heater (at spec voltage)	0-850F° (0-454C°) @ 240V 0-1150F° (621C°) - booster	0-800F° (0-427C°) @ 240V 0-900F° (482C°) - booster	0-800F° (0-427C°) @ 240V 0-900F° (482C°) - booster	0-850F° (0-454C°) @ 240V 0-1150F° (621C°) - booster	0-850F° (0-454C°) @ 240V 0-1150F° (621C°) - booster	0-850F° (0-454C°) @ 240V 0-1150F° (621C°) - booster	0-850F° (0-454C°) @ 240V 0-1150F° (621C°) - booster	
Heater Size	16" x 18" (40 x 45 cm)	16" x 24" (40 x 61 cm)	16" x 48" (40 x 122 cm)	12" x 24" (30 x 61 cm)	12" x 24" (30 x 61 cm)	12" x 48" (30 x 122 cm)	12" x 72" (30 x 183 cm)	
Total Wattage	1,860 Watts Total (1.86kW)	4,050 Watts Total (4.05kW)	8,100 Watts Total (8.1kW)	6,300 Watts Total (6.3kW)	8,900 Watts Total (8.9kW)	17,800 Watts Total (17.8kW)	26,700 Watts Total (26.7kW)	
Cost/hr to operate based on 10 cents/kwh	19 cents	41 cents	81 cents	63 cents	89 cents	\$1.78	\$2.67	
Electrical Specs	Amperage shown is for reference only, actual amperage at installation will depend on exact line voltage.							
208V, 1 Phase 3 wire 50/60 HZ	FLA = 10A	FLA = 21A	FLA = 42A	N/A	N/A	N/A	N/A	
240V, 1 Phase 3 wire 50/60 HZ	FLA = 9A	FLA = 16A	FLA = 32A	FLA = 30A	FLA = 42A	FLA = 83A	N/A	
240V, 3 Phase 4 wire 50/60 HZ	N/A	N/A	FLA = 20A	FLA = 18A	FLA = 24A	FLA = 45A	FLA = 73A	
400V, 3 Phase 5 wire 50/60 HZ	N/A	N/A	FLA = 14A	FLA = 11A	FLA = 15A	FLA = 30A	FLA = 43A	
Electrical Connection	Cordset Included NEMA 6-15P (208V) NEMA 6-15P (240V)	Cordset Included NEMA 6-20P (240V)	All amps shown are FLA (Full Load Amps), not recommended line size! Dryers on this page must be hard wired to the power terminal provided. A licensed electrician must be consulted and should refer to articles, 210.20(a), 215.3 and 310 of the NEC code.					
Unit Weight	172 lbs (78 kg)	220 lbs (100 kg)	380 lbs (173 kg)	304 lbs (137.9 kb)	424 lbs (193 kg)	636 lbs (289 kg)	850 lbs (385.6 kg)	

Single Zone Add-on chambers (no boost)

	LR-X1-18#	LR-X1-30#	LR-X1-54#	LR-X2-30#	LR-X3-30#	LR-X3-54#	LR-X3-78#
Additional Shirts/hr Plastisol @ 25 secs**	162+	162+	324+	240+	360+	720+	1,080+
Additional Shirts/hr wb/discharge @50 secs**	81+	81+	162+	122+	185+	370+	555+
Additional Shirts/hr DTG/digital**	34 @ 2 min. 27 @ 2.5 min. 23 @ 3 min.	34 @ 2 min. 27 @ 2.5 min. 23 @ 3 min.	68 @ 2 min. 54 @ 2.5 min. 46 @ 3 min.	51 @ 2 min. 40 @ 2.5 min. 34 @ 3 min.	77 @ 2 min. 61 @ 2.5 min. 51 @ 3 min.	154 @ 2 min. 123 @ 2.5 min. 103 @ 3 min.	231 @ 2 min. 185 @ 2.5 min. 155 @ 3 min.
Chamber Length	18" (46 cm)	18" (46 cm)	18" (46 cm)	27"(69cm)	41"(104cm)	41"(104cm)	41"(104cm)
Total Wattage	2,050 Watts	240V / 1 @ 2,600 Watts 120V / 1 @ 2,000 Watts	5,200 Watts	5,200 Watts Total	7,800 Watts Total	15,600 Watts Total	23,400 Watts Total
Electrical Specs Chamber	240V / 9A / 1 Ph. / NEMA 6-15P	240V / 10A / 1 Ph. 120V / 15.5A / 1 Ph.	240V / 23A / 1 Ph. / 3 wire 50/60HZ	240V / 23A / 1 Ph. / 3 wire 50/60HZ	240V / 36A / 1 Ph. / 3 wire 50/60HZ	240V / 71A / 1 Ph. / 3 wire 50/60HZ	240V / 63A / 3 Ph. / 4 wire 50/60HZ

*0.3-2.9 FPM (0.1-0.9 MPM) with optional creeper gear

**When added to the rear of a LittleRed XD or Lo-E dryer