

# MID-LEVEL INFRARED DRYERS

## LITTLERed SERIES



LR-X2-30



LR-X2-54



LR-X3-30



LR-X3-54

All LittleRed series dryers have a tilting heater design. Works great for curing hats!!



	Dual Infrared Elements <b>LR-X2-30</b>	Dual Infrared Elements <b>LR-X2-54</b>	Three Infrared Elements <b>LR-X3-30</b>	Three Infrared Elements <b>LR-X3-54</b>
<b>Total Wattage</b>	5,200w @240V	10,400w @240V	7,800w @240V	15,600w @240V
<b>Belt Width</b>	30" (76cm)	54" (137.2cm)	30" (76cm)	54" (137.2cm)
<b>Heater Width**</b>	24" (61cm)	48" (122cm)	24" (61cm)	48" (122cm)
<b>Conveyor Length</b>	66" (1.68m)	66" (1.68m)	102" (2.59m)	102" (2.6m)
<b>Chamber Length</b>	27" (69cm)	27" (69cm)	41" (104m)	41" (104cm)
<b>Powered Exhaust</b>	300 CFM (8.5 CMM)	350 CFM (9.9 CMM)	388 CFM (11 CMM)	550 CFM (15.6 CMM)

### CURE TIMES

<b>Plastisol @ 25 secs.*</b>	260+/hr	520+/hr	360+/hr	720+/hr
<b>Waterbased/Discharge @ 70 secs.*</b>	90+/hr	180+/hr	120+/hr	240+/hr

## Features

- HEAVY DUTY** "X-Series" Conveyor Belt Roller Tracking System with 30" (76 cm) or 54" (137 cm) wide Teflon coated fiberglass belt
- ACCURATE** Digital PID Temperature controller is accurate to +/-1°F
- ADJUSTABLE** 2" - 7" (5 - 17.7 cm) belt-to-heater clearance, adjustable separately on each side for each heater
- EXHAUST** Powered exhaust to remove fumes and moisture
- CONSISTENT** DC belt speed control w/ digital display
- EXPANDABLE** Add 18" (46cm) and 36" (92 cm) chambers and/or 18" (46 cm) belt extensions

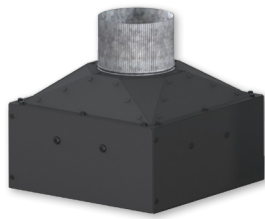
## Options

- Additional chambers can be added as well as belt extensions
- Heavy duty belt motor (Standard on X2-54)
- Locking casters for easy mobility

\* Production speeds are estimates are based on 16" centers and will vary depending on ink manufacturer, humidity of shop, and other variables.  
\*\* Recommended maximum image width = heater width minus 4" (10cm).



# INFRARED DRYER ACCESSORIES



## EXHD

Add-On exhaust for  
D-100 and D-1000

## S-100



Mobile Stand w/ wheels

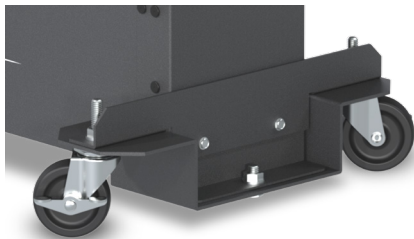
Two sizes available

- 27 x 27" (68.6 x 68.6 cm)
- 27 x 35" (68.6 x 88.9 cm)

Optional screen shelves and drawer kits

Perfect for:

- Presses and dryers
- PTF-100 powder shaker
- Additional worktop space

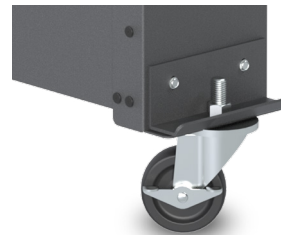


## WS-E-DD

Drop Down Wheel Set for  
DB, LR & EC-I Dryers

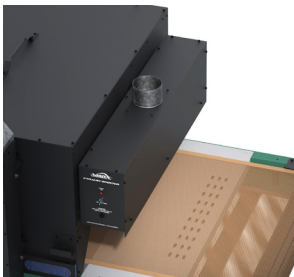
## WS-EHD

Drop Down Wheel Set for  
EC-II, ER & BR Dryers



## WS-EC

Standard Wheel Set for  
all non-tabletop Dryers

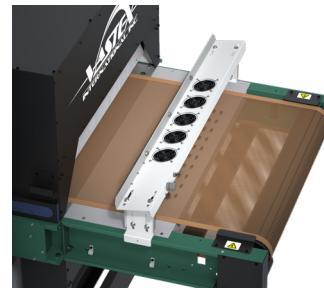


## EXHAUST HOOD

Strongly recommended for DTF adhesives

### FEATURES

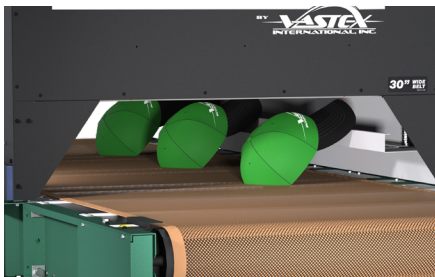
- Removes fumes at exit the dryer
- EXH-D1H fits D-100 and D-1000 (chamber mounted)
- EXH-18 fits 18" (46cm) to 30" (76cm) wide belts
- EXH-42 fits 54" (137cm) wide belts
- EXH-66 fits 78" (198cm) wide belts
- Available in 120v or 240v



## CONVEYOR AIR BAR

### FEATURES

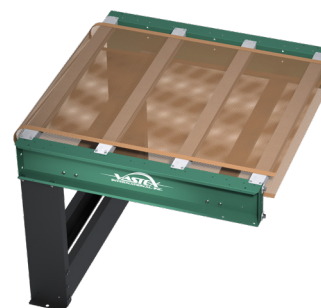
- Cools ink as garments exit the dryer
- CABX-30 fits 33.1-39.1" (84-99cm) wide conveyor
- CABX-54 fits 58.3-64.3" (148-163cm) wide conveyor
- CABX-78 fits 82.3-88.3" (209-224cm) wide conveyor
- Works on many non-Vastex dryers
- Available in 120v or 240v



## HAT SUPPORT RAIL

### FEATURES

- Angles hats so front is parallel with heaters
- HR-1 fits EconoRed II dryers
- HR-2 fits EconoRed III & BigRed Dryers



## CONVEYOR EXTENSIONS

Extend your conveyor in  
18" (46cm), 36" (92cm) and  
54" (137cm) increments



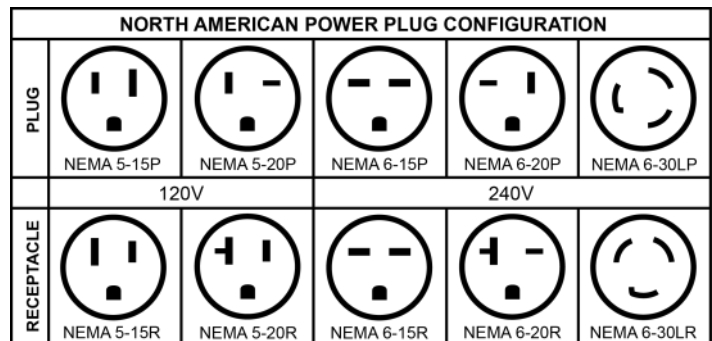
# LittleRed X1, X2, & X3

# Technical Specifications



	LR-X1-18	LR-X1-30	LR-X2-30	LR-X1-54	LR-X2-54	LR-X3-30	LR-X3-54	LR-X3-78	
Heater Warranty	5 Year	5 Year	5 Year	5 Year	5 Year	5 Year	5 Year	5 Year	
Defect Warranty	2 Year	2 Year	2 Year	2 Year	2 Year	2 Year	2 Year	2 Year	
Shirts / Hr Plastisol	110+@ 25 secs.	90+(120V)/130+(240V) @ 25 secs.	260+@ 25 secs.	260+@ 25 secs.	520+@ 25 secs.	360+@ 25 secs.	720+@ 25 secs.	1,080+@ 25 secs.	
Shirts/hr wb/discharge	50+@ 70 secs.	45+@ 70 secs.	90+@ 70 secs.	90+@ 70 secs.	180+@ 70 secs.	120+@ 70 secs.	240+@ 70 secs.	360+@ 70 secs.	
Time in Tunnel Range (mm:ss)	00:17 - 01:20	00:17 - 01:46	00:14 - 01:28	00:17 - 01:46	00:11 - 01:39	00:11 - 01:35	00:11 - 01:35	00:11 - 01:35	
Belt Speed	0.6 - 7.4 FPM (0.18 - 2.3 MPM)	0.6 - 7.4 FPM (0.18 - 2.3 MPM)	1.4 - 17.7 FPM (0.4 - 5.4 MPM)	0.6 - 7.4 FPM (0.18 - 2.3 MPM)	1.4 - 17.7 FPM (0.4 - 5.4 MPM)	1.4 - 7.4 FPM (0.18 - 2.3 MPM)	1.4 - 7.4 FPM (0.18 - 2.3 MPM)	1.4 - 7.4 FPM (0.18 - 2.3 MPM)	
Exhaust (Free Air)	144 CFM (4.1 CMM)	144 CFM (4.1 CMM)	300 CFM (8.5 CMM)	300 CFM (8.5 CMM)	350 CFM (9.9 CMM)	650 CFM (18.4 CMM)	550 CFM (15.6 CMM)		
Exhaust Diameter	4" (10.16 cm)	4" (10.16 cm)	6" (15.24 cm)	6" (15.24 cm)	6" (15.24 cm)	8" (20.32 cm)	8" (20.32 cm)	8" (20.32 cm)	
Overall Length	48" (122 cm)	48" (122 cm)	66" (168 cm)	66" (168 cm)	66" (168 cm)	88" (224 cm)	88" (224 cm)	102" (260 cm)	
Overall Width	30" (76 cm)	41" (105cm)	41" (105 cm)	65" (166 cm)	65" (166 cm)	41" (105 cm)	65" (166 cm)	89" (226 cm)	
Overall Height	48" (122cm)	48" (122cm)	50" (127 cm)	48" (122cm)	50" (127 cm)	50" (127 cm)	50" (127 cm)	50" (127 cm)	
Belt Width	18" (46cm)	30" (76 cm)	30" (76 cm)	54" (137cm)	54" (137cm)	30" (76cm)	54" (137cm)	78" (198 cm)	
Chamber Length	18" (45.7 cm)	18" (46cm)	27" (69cm)	18" (46cm)	27" (69cm)	41"(104cm)	41"(104cm)	41"(104cm)	
Chamber Infeed Width	21" (53cm)	33.5" (85cm)	33.5" (85 cm)	58.5" (149 cm)	58.5" (149 cm)	33.5" (85 cm)	58.5" (149 cm)	58.5" (149 cm)	
Chamber Infeed Height(adjustable)	2" - 7" (5 - 17.7 cm)	2" - 7" (5 - 17.7 cm)	2" - 7" (5 - 17.7 cm)	2" - 7" (5 - 17.7 cm)	2" - 7" (5 - 17.7 cm)	2" - 7" (5 - 17.7 cm)	2" - 7" (5 - 17.7 cm)	2" - 7" (5 - 17.7 cm)	
Heat Range (@ Heater)	0-750 F° (0-399 C°) @ 120 or 240V	0-850F° (0-454C°) @ 240V 0-750F° (0-399C°) @ 120V	0-850 F° (0-454 C°) @ 240V	0-850 F° (0-454 C°) @ 240V	0-850 F° (0-454 C°) @ 240V	0-850 F° (0-454 C°) @ 240V	0-850 F° (0-454 C°) @ 240V	0-850 F° (0-454 C°) @ 240V	
Heater Size	16"x16"(40.6x40.6 cm)	12" x 24" (30 x 61 cm)	12" x 24" (30 x 61 cm)	12" x 48" (30 x 122 cm)	12" x 48" (30 x 122 cm)	12" x 24" (30 x 61 cm)	12" x 48" (30 x 122 cm)	12" x 72" (30 x 183 cm)	
Total Wattage	1,625 Watts	240V / 1 @ 2,600 Watts 120V / 1 @ 2,000 Watts	5,200 Watts Total	5,200 Watts	10,400 Watts @ 240V 12,000 Watts @ 380V	7,800 Watts Total	15,600 Watts Total	23,400 Watts Total	
Cost/hr to operate based on 10 cents/kwh	16 cents	26 cents @ 240V 20 cents @ 120V	52 cents	52 cents	\$1.04	78 cents	1.56 cents	2.34 cents	
<b>Electrical Specs</b>	<b>Amperage shown is for reference only, actual amperage at installation will depend on exact line voltage.</b>								
<b>120V, 1 Phase</b> 3 wire 50/60 HZ	FLA = 12.5A	FLA = 16.5A	N/A	N/A	N/A	N/A	N/A	N/A	
<b>208V, 1 Phase</b> 3 wire 50/60 HZ	FLA = 8.5A	FLA = 12.5A	FLA = 30A	FLA = 30A	FLA = 58A	N/A	N/A	N/A	
<b>240V, 1 Phase</b> 3 wire 50/60 HZ	FLA = 6.3A	FLA = 11A	FLA = 24A	FLA = 24A	FLA = 49A	FLA = 37A	FLA = 72A	FLA = 109A	
<b>240V, 3 Phase</b> 4 wire 50/60 HZ	N/A	N/A	FLA = 18A	FLA = 18A	FLA = 30A	FLA = 22A	FLA = 43A	FLA = 64A	
<b>380V, 3 Phase</b> 4 wire 50/60 HZ	N/A	N/A	FLA = 10A	FLA = 10A	FLA = 20A	FLA = 13A	FLA = 26A	FLA = 39A	
<b>Electrical Connection</b>	Cordset Included NEMA 5-15P (120V) NEMA 6-15P (240V)	Cordset Included NEMA 5-20P (120V) NEMA 6-15P (240V)	<b>All amps shown are FLA (Full Load Amps), not recommended line size! Dryers on this page must be hard wired to the power terminal provided.</b>						
	<b>A licensed electrician must be consulted and should refer to articles, 210.20(a), 215.3 and 310 of the NEC code.</b>								
<b>Unit Weight</b>	172 lbs (78 kg)	220 lbs (100 kg)	304 lbs (138 kg)	380 lbs (173 kg)	480 lbs (218 kg)	424 lbs (193 kg)	Call for details	Call for details	
<b>Shipping Weight**</b>	295 lbs (134 kg)	350 lbs (156 kg)	495 lbs (225 kg)	650 lbs (295 kg)	780 lbs (354 kg)	548 lbs (249 kg)	815 lbs (370 kg)	1,600 lbs (726 kg)	
<b>Shipping Dimensions**</b>	37" x 45" x 40" (94 x 115 x 102 cm)	37" x 45" x 40" (94 x 115 x 102 cm)	49" x 45" x 60" (125 x 115 x 153 cm)	69" x 49" x 59" (176 x 125 x 150 cm)	69" x 49" x 60" (176 x 125 x 153 cm)	49" x 45" x 56" (125 x 115 x 143 cm)	69" x 49" x 60" (176 x 125 x 153 cm)	97" x 61" x 59" (246 x 155 x 150 cm)	

1 in = 2.54 cm  
1 lb = 0.454 kg



\* Production speeds are estimates are based on 16" centers and will vary depending on ink manufacturer, humidity of shop, and other variables.

\*\*All shipping weights and dimensions are for continental US shipping only. Call for other shipping specifications. Ex-works from Bethlehem, PA.